

# ROTARY SWITCH

## RMS ROTARY MAINS SWITCH

### ELECTRICAL & MECHANICAL SPECIFICATION

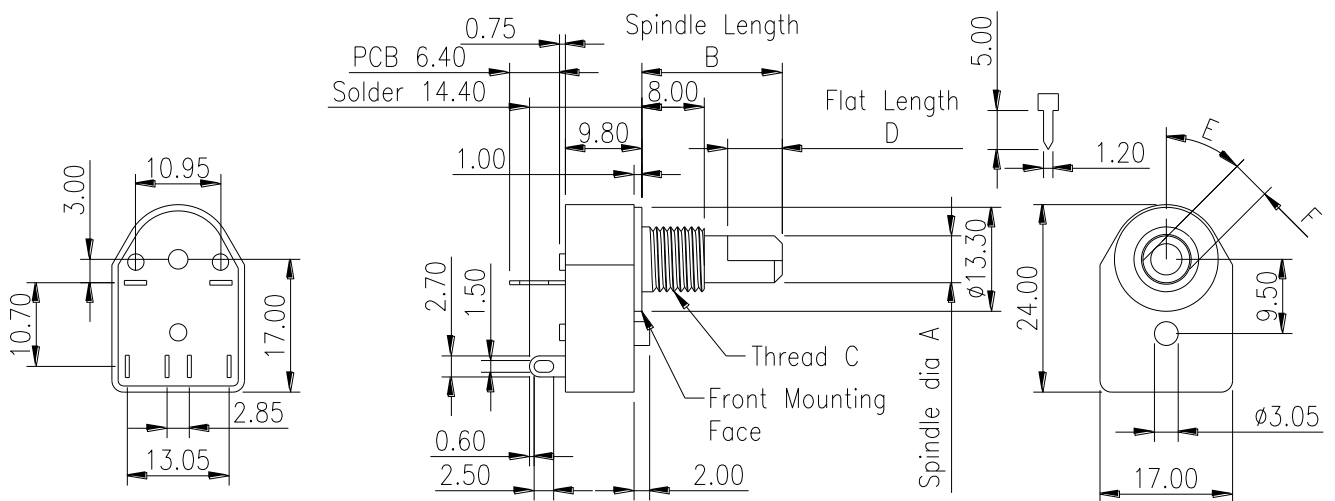
<b>Switch Rating:</b>	4/80A @250V ac. R/C 10A @12V dc	<b>Life:</b>	>15,000 Cycles
<b>Proof Voltage:</b>	3kVac (Initial)	<b>Operating Temperature:</b>	-25°C to +85°C
<b>Contact Resistance:</b>	<20mΩ (Initial)	<b>Insulation Resistance:</b>	>999MΩ @ 500Vdc (Initial)
<b>Switch Contacts:</b>	Silver Cadmium Oxide	<b>Contact Gap:</b>	>2.5mm (min)
<b>Switch Chamber:</b>	Polyamide 6.6 G.F. V0 Rated	<b>Tag Panel:</b>	SRBP
		<b>Terminals:</b>	Brass CZ108, Ag plated

### FEATURES

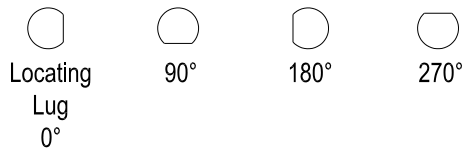
- |                          |                                |                          |
|--------------------------|--------------------------------|--------------------------|
| Non changeover type      | Approved to EN61058 ENEC (VDE) | Made in UK               |
| Double pole single throw | Solder or pcb terminals        | 45° index angle          |
|                          |                                | Spindle flats (optional) |

### TERMINAL LAYOUT

OPTIONAL SPINDLE  
FLAT SHOWN.



## OPTIONAL SPINDLE FLATS



Note: The angle of the spindle flat is shown with the locating lug at the bottom of the switch, when the switch is set in the fully anticlockwise position (position 1) viewed from the knob end of the spindle

## STANDARD PART NUMBERS

Basic Types	A	B	C	D	E	F
	Spindle diameter	Spindle length	Bush thread	Spindle flat length	Spindle angle	Spindle flat
<b>Imperial</b>	6.35mm	55mm	9.52 x 32TPI	No Flat	N/a	N/a
<b>Metric</b>	6.0mm	38mm	M10 x0.75	No Flat	N/a	N/a

Circuitry	Terminal layout viewed from rear	Terminal type	Standard Metric Switches	Standard Imperial Switches
<b>2 pole off-on</b>		Solder	RMS1035	RMS1100
		PCB	RMS1130	RMS1159

Circuitry	Terminal layout viewed from rear of switch	Terminal type	Standard Metric Switches	Standard Imperial Switches
<b>2 pole changeover (not approved)</b>		Solder	RMS1089	RMS1101
		PCB	RMS1153	RMS1128



# Mouser Electronics

Authorized Distributor

Click to View Pricing, Inventory, Delivery & Lifecycle Information:

[Lorlin:](#)

[RMS1100](#) [RMS1130](#) [RMS1159](#) [RMS1035](#) [RMS1224](#)